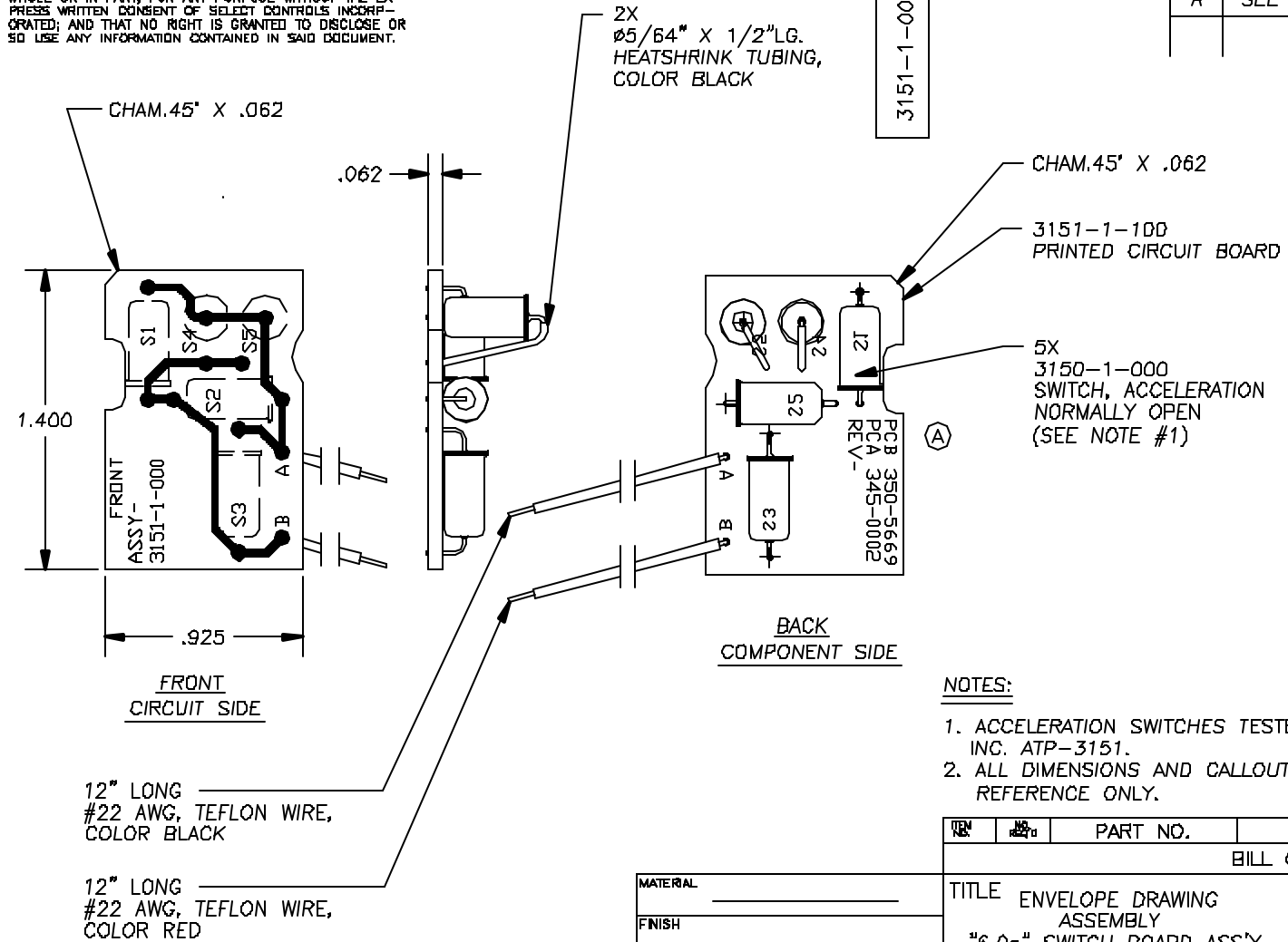



THIS DOCUMENT IS THE PROPERTY OF SELECT CONTROLS INCORPORATED AND IS CONVEYED WITH THE EXPRESS CONDITION THAT IT AND THE INFORMATION CONTAINED IN IT ARE NOT TO BE USED, DISCLOSED, OR REPRODUCED IN WHOLE OR IN PART, FOR ANY PURPOSE WITHOUT THE EXPRESS WRITTEN CONSENT OF SELECT CONTROLS INCORPORATED; AND THAT NO RIGHT IS GRANTED TO DISCLOSE OR SO USE ANY INFORMATION CONTAINED IN SAID DOCUMENT.



REVISIONS				
	DESCRIPTION	BY	CHK	ENG
A	SEE ECN 3151-1-100A	AHN		
		4/28/08		

**NOTES:**

1. ACCELERATION SWITCHES TESTED IN ACCORDANCE WITH SELECT CONTROLS, INC. ATP-3151.
2. ALL DIMENSIONS AND CALLOUTS IN FIELD OF DRAWING ARE FOR REFERENCE ONLY.

ITEM	NO.	PART NO.	DESCRIPTION	REMARKS
BILL OF MATERIAL				
TITLE			45-3 KNICKERBOCKER AVE. BOHEMIA, N.Y. 11716	
ENVELOPE DRAWING ASSEMBLY "6.0g" SWITCH BOARD ASS'Y.				
MATERIAL				
FINISH			DRAWING NO. 3151-1-000	
DO NOT SCALE DRAWING REMOVE BURRS, BREAK SHARP EDGES TOLERANCES UNLESS SPECIFIED: FRACTIONS: ±1/64" ANGLE: ±0.30° MACH FINISH: 125/ RFB DEC: 80 ±.010 DEC: 800 ±.005			SCALE: 2:1	DATE: 4/28/08
NO. REV'D			NO. REV'D	REV. A
N/A			N/A	
WEIGHT:			APPROVED	SHEET 1 OF 1