

THIS DOCUMENT IS THE PROPERTY OF SELECT CONTROLS INCORPORATED AND IS CONVEYED WITH THE EXPRESS CONDITION THAT IT AND THE INFORMATION CONTAINED IN IT ARE NOT TO BE USED, DISCLOSED, OR REPRODUCED IN WHOLE OR IN PART, FOR ANY PURPOSE WITHOUT THE EXPRESS WRITTEN CONSENT OF SELECT CONTROLS INCORPORATED; AND THAT NO RIGHT IS GRANTED TO DISCLOSE OR SO USE ANY INFORMATION CONTAINED IN SAID DOCUMENT.

- NOTES:
 1. SWITCH TYPE: UNIDIRECTIONAL, SPST, NORMALLY OPEN, NON-LATCHING. (A)
 2. PHYSICAL CHARACTERISTICS

REF.	CHARACTERISTIC	REQUIREMENTS	TEST METHOD
2.1	WEIGHT	2.0 GRAMS MAX.	SCALE
2.2	SEAL a) HERMETIC b) GROSS	1X10 ⁻⁶ SCES H ₂ O/ATM MAX.	ML-STD-202 TEST METHOD 112 TEST CONDITION C, PROC. 111A ML-STD-750 METHOD 1071 TEST CONDITION B
2.3	TERMINAL STRENGTH	3 LBS. MIN AXIAL PULL	ML-STD-202, MTD 277, TEST CONDITION A
2.4	SOLDERABILITY	DMT AGING	ML-STD-203, MTD 208
2.5	MARKING	EPOXY INK UNIT IDENTIFICATION	VISUAL

3. OPERATING CHARACTERISTICS

REF.	CHARACTERISTIC	REQUIREMENTS
3.1	CLOSING ACCELERATION THRESHOLD	CONTACTS SHALL BE CLOSED AT ANY ACCELERATION MORE THAN 3.8 G'S. CONTACTS SHALL BE OPEN AT 1.4 G'S OR LESS APPLIED IN THE Z AXIS ACCELERATION SENSITIVE DIRECTION Z
3.2	OPERATING LIFE	500,000 OPERATIONS
3.3	STORAGE LIFE	15 YEARS MIN.

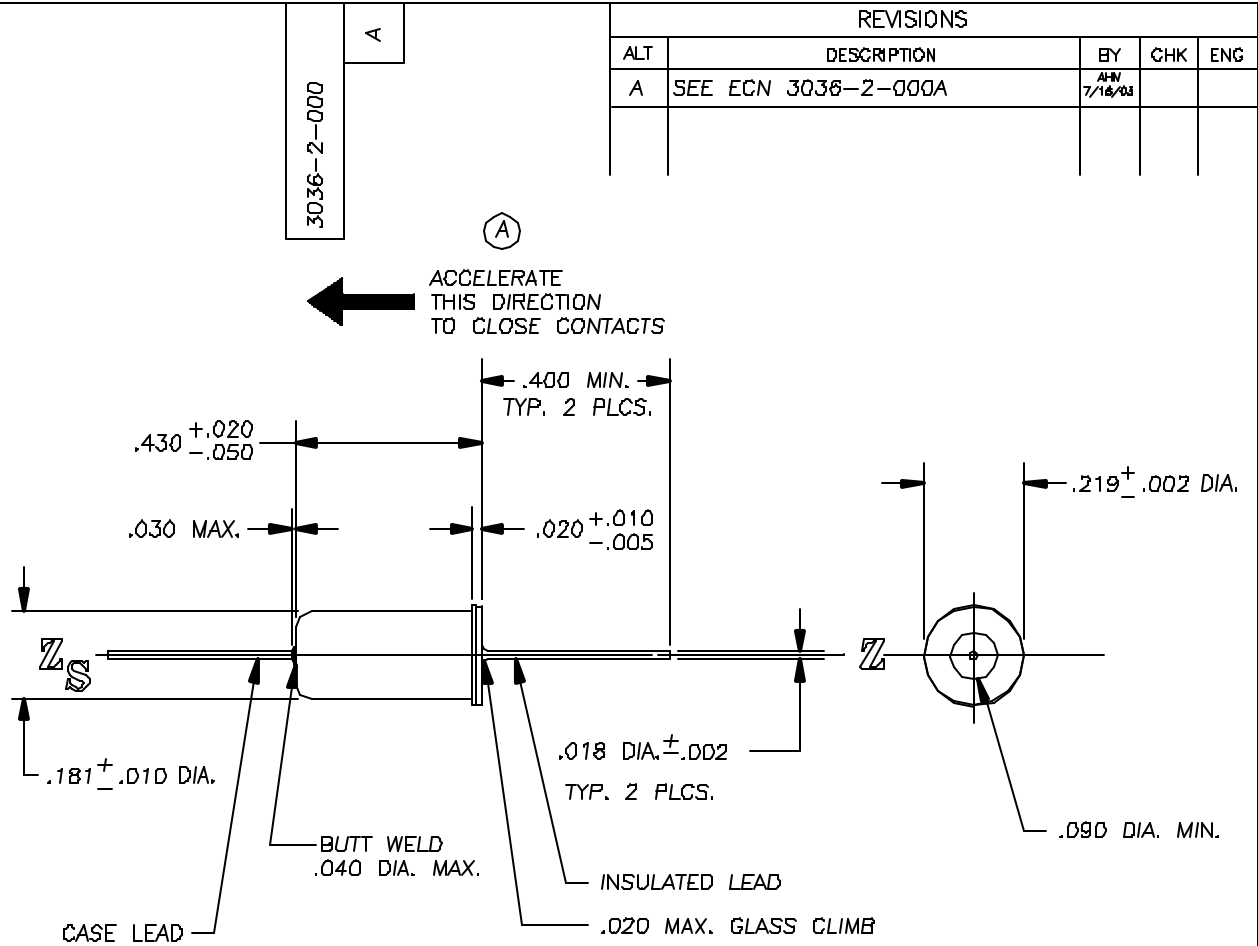
4. ELECTRICAL CHARACTERISTICS

REF.	CHARACTERISTIC	REQUIREMENTS	TEST METHOD
4.1	INSULATION RESISTANCE	30 MEGOHMS MIN. @ 500 VDC	ML-STD-202, MTD 302 TEST CONDITION B
4.2	CONTACT RESISTANCE	50 OHMS MAX. @ 1.0 MILLIAMPERES	
4.3	CURRENT	0.05 AMP CONTINUOUS	

5. ENVIRONMENTAL CAPABILITY

REF.	CHARACTERISTIC	TEST METHOD
5.1	OPERATING TEMPERATURE	-54°C TO +85°C, 2 HOUR MINIMUM SOAK
5.2	TEMPERATURE HUMIDITY CYCLING	ML-STD-331, TEST 100.1 (4 DAY TOTAL)
5.3	VIBRATION	RANDOM ON RANDOM PER ML-STD-810C TABLE 514.4-AX
5.4	SHOCK	HALF SINE SHOCK OF 80.0 G'S FOR 2.5 ms AND 50.0 G'S FOR 11.0 ms

REVISIONS				
ALT	DESCRIPTION	BY	CHK	ENG
A	SEE ECN 3036-2-000A	AW 7/16/03		



ITEM	NO. REQ'D	PART NO.	DESCRIPTION	REMARKS	
BILL OF MATERIAL					
MATERIAL		TITLE			
FINISH		ACCELERATION SWITCH NORMALLY OPEN			
DO NOT SCALE DRAWING REMOVE BURRS, BREAK SHARP EDGES TOLERANCES UNLESS SPECIFIED: FRACT: ± 1/78 ANGLE ± 2 MACH FINISH: ✓ DEC: .00 ± .03 RHS DEC: .000 ± .010		NO. REQ'D	N/A	NO. REQ'D	N/A
		SCALE:	4:1	DATE	
		WEIGHT:	NOTED	DATE	
		APPROVED	DATE	DATE	
		DRAWING NO.		REV	
		3036-2-000		A	
		SHEET 1 OF 1			

Select Controls Inc.
 350 I CENTRAL AVE.
 BOHEMIA, N.Y. 11716