

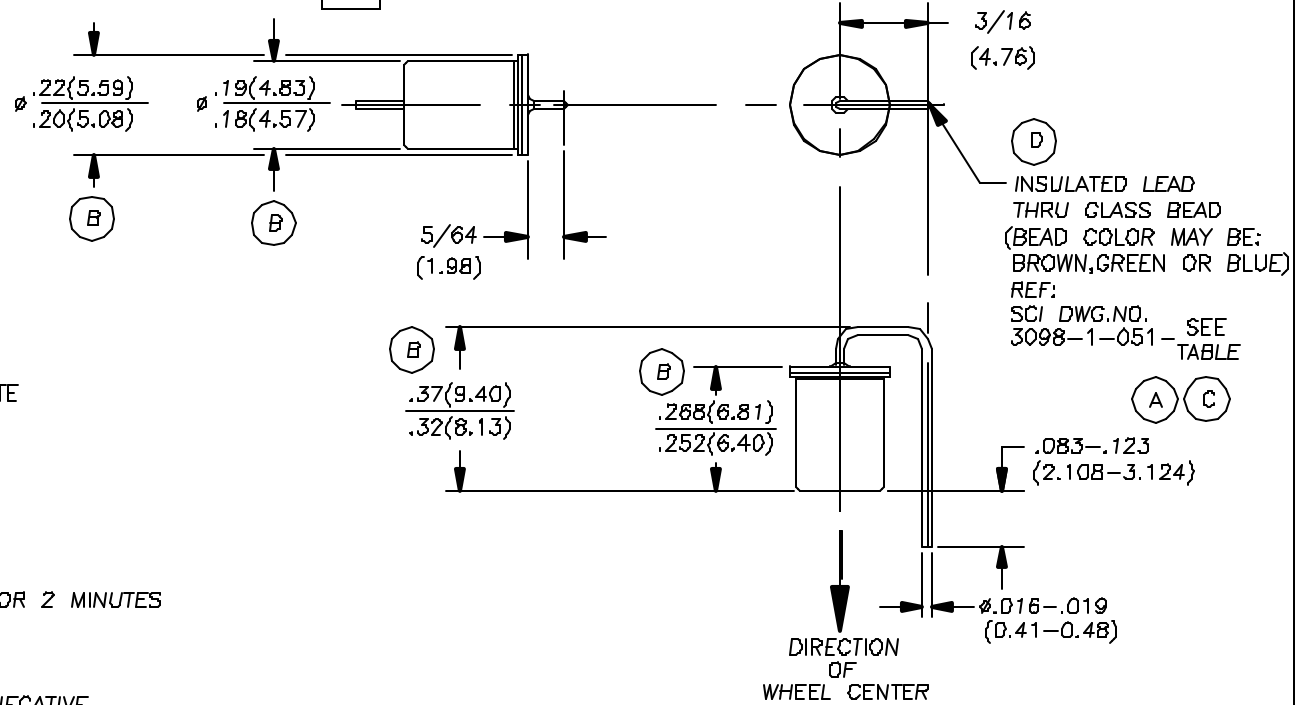
THIS DOCUMENT IS THE PROPERTY OF SELECT CONTROLS INCORPORATED AND IS CONVEYED WITH THE EXPRESS CONDITION THAT IT AND THE INFORMATION CONTAINED IN IT ARE NOT TO BE USED, DISCLOSED, OR REPRODUCED IN WHOLE OR IN PART, FOR ANY PURPOSE WITHOUT THE EXPRESS WRITTEN CONSENT OF SELECT CONTROLS INCORPORATED; AND THAT NO RIGHT IS GRANTED TO DISCLOSE OR SO USE ANY INFORMATION CONTAINED IN SAID DOCUMENT.

NOTE:


1. SWITCH: UNIDIRECTIONAL, NORMALLY OPEN, AUTOMATICALLY RESETTABLE
2. WEIGHT: 2 GRAMS MAXIMUM
3. CONTACTS: SPST, NORMALLY OPEN
4. CONTACT RESISTANCE: 50 OHMS MAXIMUM
5. CONTACT RATING: 50MA AT 12VDC
6. INSULATION RESISTANCE: 30 MEGOHMS MINIMUM AT 500VDC
7. OPERATING CHARACTERISTICS:
 - a) CONTACTS SHALL BE OPEN AT STEADY STATE ACCELERATIONS OF 1.5 G'S OR LESS
 - b) CONTACTS SHALL BE CLOSED AT STEADY STATE ACCELERATIONS OF 4.0 G'S OR MORE
8. TEMPERATURE RANGE:
 - a) OPERATING: -40°C TO +150°C
 - b) NON-OPERATING: -54°C TO +200°C
 - c) NON-OPERATING FLOW SOLDERING: +320°C FOR 2 MINUTES
9. SHOCK TEST: HALF SINE SHOCK EVENT, 80 G PEAK ACCELERATION FOR 11MS DURATION, 6 SHOCKS POSITIVE AND 6 SHOCKS NEGATIVE
10. DROP TEST: WITHSTAND 1 METER DROP 3 TIMES EACH AXIS
11. SWITCH SEAL: HERMETIC; PER MIL-STD-750C, TEST CONDITION D
12. LEAD STRENGTH: 3 LBS. MINIMUM AXIAL PULL

2082-7-000
D

REVISIONS				
ALT	DESCRIPTION	BY	CHK	ENG
A	SEE ECN 2082-7-000A	AHN 12/5/01		
B	SEE ECN 2082-7-000B	AHN 8/15/02		
C	SEE ECN 2082-7-000C	AHN 8/15/03		
D	SEE ECN 2082-7-000D	AHN 11/21/05		



U.S. PATENT NO. D470,823S

ITEM	NO.	PART NO.	DESCRIPTION	REMARKS
(X.XX) DENOTES DIMENSIONS IN MILLIMETERS				
BILL OF MATERIAL				
MATERIAL		TITLE		
FINISH		ACCELERATION SWITCH NORMALLY OPEN 2.75G		
		 45-3 KNICKERBOCKER AVE. BOHEMIA, N.Y. 11716		
DO NOT SCALE DRAWING REMOVE BURRS, BREAK SHARP EDGES TOLERANCES UNLESS SPECIFIED: FRACT: ±1/64 MACH FINISH: ✓ RFS	NO. REQ'D N/A	NO. REQ'D N/A	SCALE: 4:1 WEIGHT: NOTED	DESIGNED: AHN DRAWN: AHN CHECKED: AHN APPROVED: AHN DATE: 5/05/01 DRAWING NO.: 2082-7-000 SHEET 1 of 1
				REV D