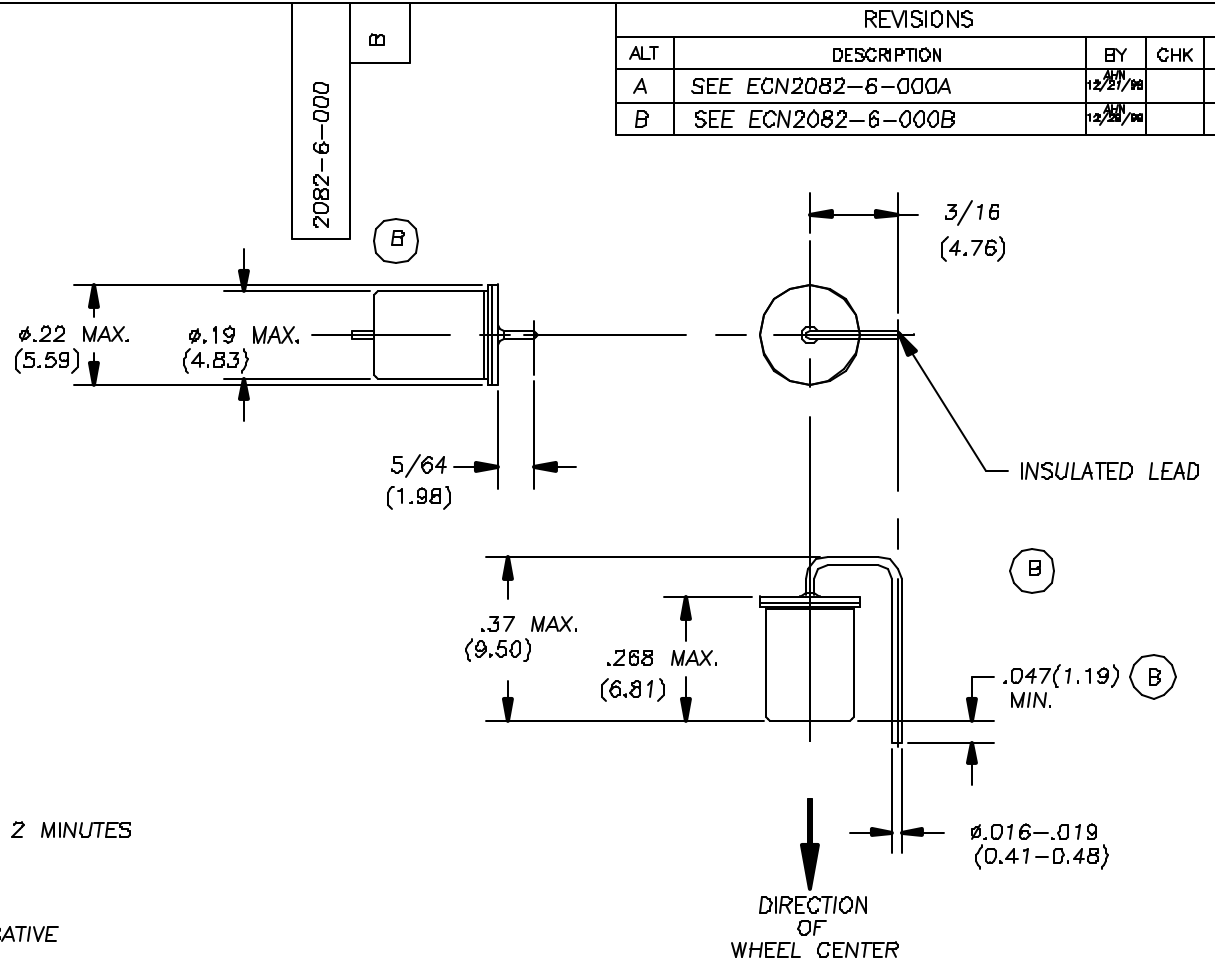



THIS DOCUMENT IS THE PROPERTY OF SELECT CONTROLS INCORPORATED AND IS CONVEYED WITH THE EXPRESS CONDITION THAT IT AND THE INFORMATION CONTAINED IN IT ARE NOT TO BE USED, DISCLOSED, OR REPRODUCED IN WHOLE OR IN PART, FOR ANY PURPOSE WITHOUT THE EXPRESS WRITTEN CONSENT OF SELECT CONTROLS INCORPORATED; AND THAT NO RIGHT IS GRANTED TO DISCLOSE OR SO USE ANY INFORMATION CONTAINED IN SAID DOCUMENT.

NOTE:

1. SWITCH: UNIDIRECTIONAL, NORMALLY OPEN, AUTOMATICALLY RESETTABLE
2. WEIGHT: 2 GRAMS MAXIMUM
3. CONTACTS: SPST, NORMALLY OPEN
4. CONTACT RESISTANCE: 50 OHMS MAXIMUM
5. CONTACT RATING: 50MA AT 12VDC
6. INSULATION RESISTANCE: 30 MEGOHMS MINIMUM AT 500VDC
7. OPERATING CHARACTERISTICS:
 - a) CONTACTS SHALL BE OPEN AT STEADY STATE ACCELERATIONS OF 1.5 G'S OR LESS
 - b) CONTACTS SHALL BE CLOSED AT STEADY STATE ACCELERATIONS OF 4.0 G'S OR MORE
8. TEMPERATURE RANGE:
 - a) OPERATING: -40°C TO +150°C
 - b) NON-OPERATING: -54°C TO +200°C
 - c) NON-OPERATING FLOW SOLDERING: +320°C FOR 2 MINUTES
9. SHOCK TEST: HALF SINE SHOCK EVENT, 80 G PEAK ACCELERATION FOR 11MS DURATION, 6 SHOCKS POSITIVE AND 6 SHOCKS NEGATIVE
10. DROP TEST: WITHSTAND 1 METER DROP 3 TIMES EACH AXIS
11. SWITCH SEAL: HERMETIC; PER MIL-STD-750C, TEST CONDITION D
12. LEAD STRENGTH: 3 LBS. MINIMUM AXIAL PULL

REVISIONS				
ALT	DESCRIPTION	BY	CHK	ENG
A	SEE ECN2082-6-000A	12/81/MS		
B	SEE ECN2082-6-000B	12/81/MS		



ITEM	NO. REQ'D	PART NO.	DESCRIPTION	REMARKS	
BILL OF MATERIAL					
MATERIAL		TITLE			
FINISH		ACCELERATION SWITCH NORMALLY OPEN			
		 350 I CENTRAL AVE. BOHEMIA, N.Y. 11716			
DO NOT SCALE DRAWING REMOVE BURRS, BREAK SHARP EDGES TOLERANCES UNLESS SPECIFIED: FRACT: ± 1/16" ANGLE ± 30° MACH FINISH: ✓ DEC: .005 ± .01 DEC: .000 ± .005		NO. REQ'D	N/A	NO. REQ'D	N/A
		SCALE: 4:1			
		WEIGHT: NOTED			
		DESIGNED	BY: AHN	12/81	
		CHECKED			
		APPROVED			
		DATE	12/81	DRAWING NO. 2082-6-000	
		DATE		REV B	
		SHEET 1 OF 1			