

THIS DOCUMENT IS THE PROPERTY OF SELECT CONTROLS INCORPORATED AND IS CONVEYED WITH THE EXPRESS CONDITION THAT IT AND THE INFORMATION CONTAINED IN IT ARE NOT TO BE USED, DISCLOSED, OR REPRODUCED IN WHOLE OR IN PART, FOR ANY PURPOSE WITHOUT THE EXPRESS WRITTEN CONSENT OF SELECT CONTROLS INCORPORATED; AND THAT NO RIGHT IS GRANTED TO DISCLOSE OR SO USE ANY INFORMATION CONTAINED IN SAID DOCUMENT.

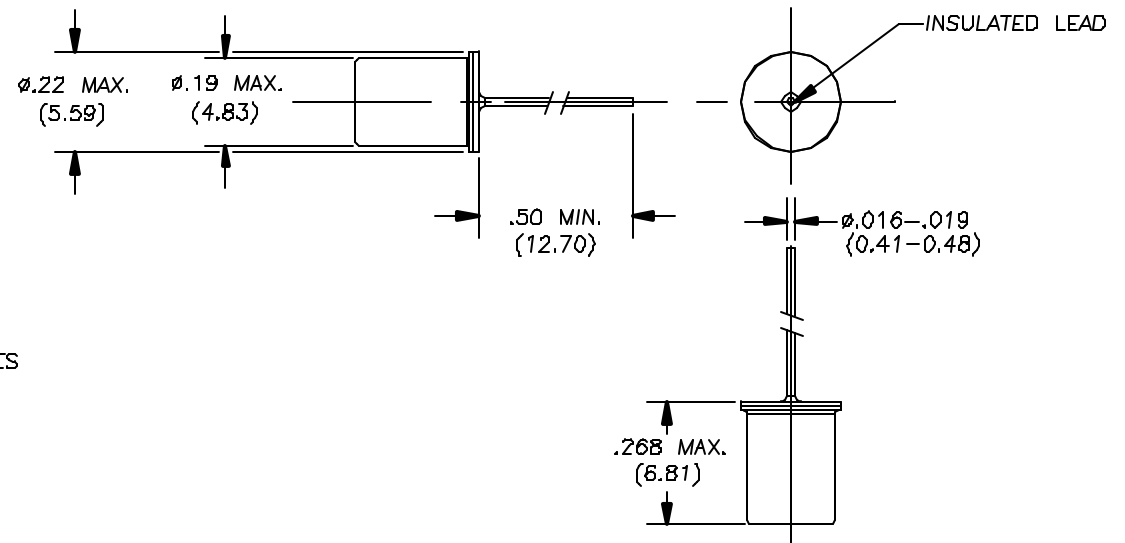
NOTE:

1. SWITCH: UNIDIRECTIONAL, NORMALLY OPEN, AUTOMATICALLY RESETTABLE
2. WEIGHT: 2 GRAMS MAXIMUM
3. CONTACTS: SPST, NORMALLY OPEN
4. CONTACT RESISTANCE: 50 OHMS MAXIMUM
5. CONTACT RATING: 50MA AT 12VDC
6. INSULATION RESISTANCE: 30 MEGOHMS MINIMUM AT 500VDC
7. OPERATING CHARACTERISTICS:
CONTACTS MUST CLOSE WHEN SUBJECTED TO A STEADY STATE ACCELERATION OF 9.7G'S ± 2G'S
8. TEMPERATURE RANGE:
 - a) OPERATING: -65°F TO +257°F
 - b) NON-OPERATING: -65°F TO +257°F
 - c) NON-OPERATING FLOW SOLDERING: +608°F FOR 2 MINUTES
9. SHOCK TEST: HALF SINE SHOCK EVENT, 80 G PEAK ACCELERATION FOR 11MS DURATION, 6 SHOCKS POSITIVE AND 6 SHOCKS NEGATIVE
10. DROP TEST: WITHSTAND 1 METER DROP 3 TIMES EACH AXIS
11. SWITCH SEAL: HERMETIC; PER MIL-STD-750C, TEST CONDITION D
12. LEAD STRENGTH: 3 LBS. MINIMUM AXIAL PULL

3132-1-000

REVISIONS				
ALT	DESCRIPTION	BY	CHK	ENG

← ACCELERATE THIS DIRECTION TO CLOSE CONTACTS



ITEM	NO. REQ'D	PART NO.	DESCRIPTION	REMARKS
(X.XX) DENOTES DIMENSIONS IN MILLIMETERS				
BILL OF MATERIAL				
MATERIAL	TITLE		45-3 KNICKERBOCKER AVE.	
FINISH	ACCELERATION SWITCH, 9.7G'S NORMALLY OPEN		BOHEMIA, N.Y. 11716	
DO NOT SCALE DRAWING REMOVE BURRS, BREAK SHARP EDGES TOLERANCES UNLESS SPECIFIED:		NO. REQ'D	NO. REQ'D	SCALE: 4:1
FRACT: ±1/64 ANGLE: 45°/30°		N/A	N/A	WEIGHT: NOTED
MACH FINISH: 125/RAZ DEC: .00 ± .010 DEC: .000 ± .005		DATE: 1/14/04		DRAWING NO. 3132-1-000
JOB: []		DATE: []		REV: []
DESIGNED: []		DATE: []		REV: []
CHECKED: []		DATE: []		REV: []
APPROVED: []		DATE: []		REV: []