

THIS DOCUMENT IS THE PROPERTY OF SELECT CONTROLS INCORPORATED AND IS CONVEYED WITH THE EXPRESS CONDITION THAT IT AND THE INFORMATION CONTAINED IN IT ARE NOT TO BE USED, DISCLOSED, OR REPRODUCED IN WHOLE OR IN PART, FOR ANY PURPOSE WITHOUT THE EXPRESS WRITTEN CONSENT OF SELECT CONTROLS INCORPORATED; AND THAT NO RIGHT IS GRANTED TO DISCLOSE OR SO USE ANY INFORMATION CONTAINED IN SAID DOCUMENT.

NOTE:

1. SWITCH: UNIDIRECTIONAL, NORMALLY OPEN, AUTOMATICALLY RESETTABLE
2. WEIGHT: 2 GRAMS MAXIMUM
3. CONTACTS: SPST, NORMALLY OPEN
4. CONTACT RESISTANCE: 50 OHMS MAXIMUM
5. CONTACT RATING: 50MA AT 12VDC
6. INSULATION RESISTANCE: 30 MEGOHMS MINIMUM AT 500VDC
7. OPERATING CHARACTERISTICS:  
CONTACTS MUST CLOSE WHEN SUBJECTED TO A STEADY STATE ACCELERATION OF 250 G'S  $\pm$  20%
8. TEMPERATURE RANGE:  
  - a) OPERATING: -65°F TO +257°F
  - b) NON-OPERATING: -65°F TO +257°F
  - c) NON-OPERATING FLOW SOLDERING: +608°F FOR 2 MINUTES
9. SHOCK TEST: HALF SINE SHOCK EVENT, 80 G PEAK ACCELERATION FOR 11MS DURATION, 6 SHOCKS POSITIVE AND 6 SHOCKS NEGATIVE
10. DROP TEST: WITHSTAND 1 METER DROP 3 TIMES EACH AXIS
11. SWITCH SEAL: HERMETIC; PER MIL-STD-750C, TEST CONDITION D
12. LEAD STRENGTH: 3 LBS. MINIMUM AXIAL PULL

3122-1-000

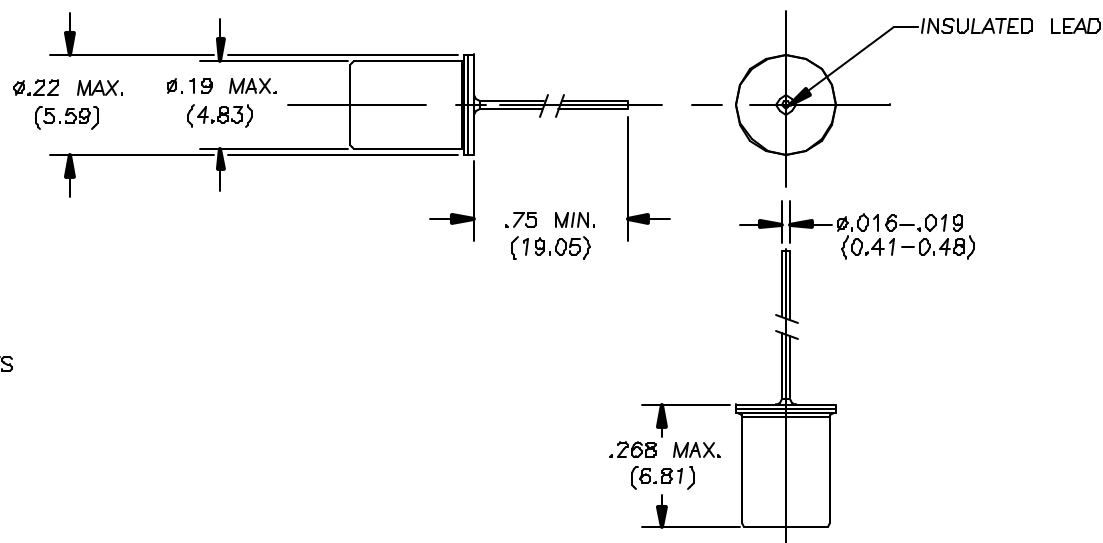
B


REVISIONS

ALT	DESCRIPTION	BY	CHK	ENG
A	SEE ECN 3122-1-000A	AHN 3/8/02		
B	SEE ECN 3122-1-000B	AHN 3/11/02		



ACCELERATE  
THIS DIRECTION  
TO CLOSE CONTACTS



(X.XX) DENOTES DIMENSIONS IN MILLIMETERS	ITEM NO.	NO. REV'D	PART NO.	DESCRIPTION	REMARKS
MATERIAL	BILL OF MATERIAL				
FINISH	TITLE				
	ACCELERATION SWITCH, NORMALLY OPEN				
	 45-3 KNICKERBOCKER AVE. BOHEMIA, N.Y. 11716				
DO NOT SCALE DRAWING REMOVE BURRS, BREAK SHARP EDGES TOLERANCES UNLESS SPECIFIED: FRACTIONS: ±1/64" ANGLES: ±0.30° MACH FINISH: 125/ RMS DEC: .00 ±.010 DEC: .000 ±.005	NO. REV'D	N/A	NO. REV'D	N/A	SCALE: 4:1
					WEIGHT: NOTED
					DATE: 3/2/02
					DRAWING NO. 3122-1-000
					REV B
					SHEET SHEET OF