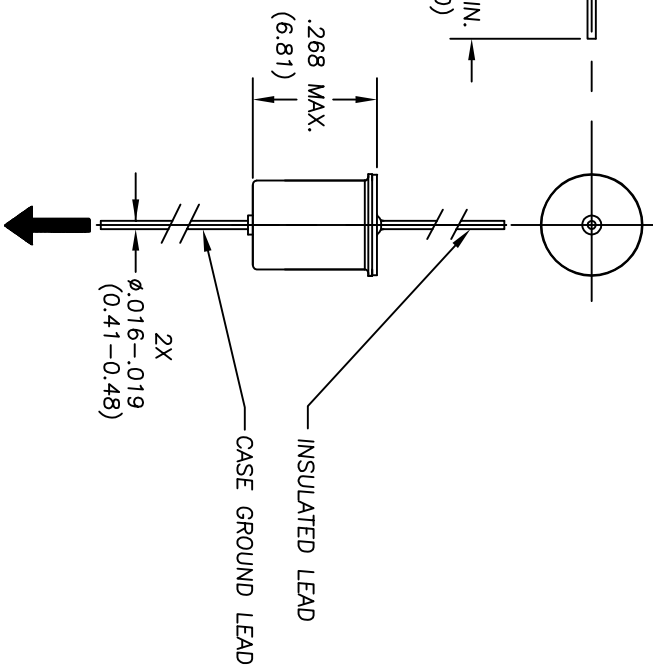
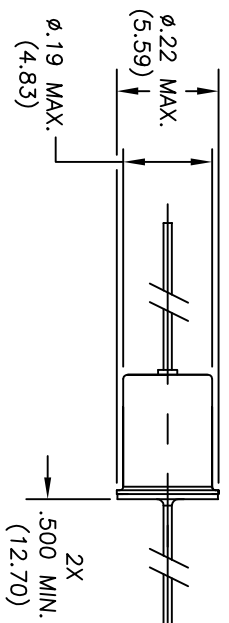


THIS DOCUMENT IS THE PROPERTY OF SELECT CONTROLS INCORPORATED AND IS CONVEYED WITH THE EXPRESS CONDITION THAT IT AND THE INFORMATION CONTAINED IN IT ARE NOT TO BE USED, DISCLOSED, OR REPRODUCED IN WHOLE OR IN PART FOR ANY PURPOSE WITHOUT THE EXPRESS WRITTEN CONSENT OF SELECT CONTROLS INCORPORATED. AND THAT NO RIGHT IS GRANTED TO DISCLOSE OR SO USE ANY INFORMATION CONTAINED IN SAID DOCUMENT.

NOTE:

1. SWITCH: UNIDIRECTIONAL, NORMALLY OPEN, AUTOMATICALLY RESETTABLE
2. WEIGHT: 2 GRAMS MAXIMUM
3. CONTACTS: SPST, NORMALLY OPEN
4. CONTACT RESISTANCE: 50 OHMS MAXIMUM
5. CONTACT RATING: 50MA AT 12VDC
6. INSULATION RESISTANCE: 30 MEGOHMS MINIMUM AT 500VDC
7. OPERATING CHARACTERISTICS: (A)
 - d) CONTACTS SHALL BE OPEN AT STEADY STATE ACCELERATIONS OF 6.25 G'S OR LESS
 - b) CONTACTS SHALL BE CLOSED AT STEADY STATE ACCELERATIONS OF 9.25 G'S OR MORE
8. TEMPERATURE RANGE:
 - d) OPERATING: -40°C TO +150°C
 - b) NON-OPERATING: -54°C TO +200°C
9. SWITCH SEAL: HERMETIC; PER MIL-STD-750C, TEST CONDITION D
10. LEAD STRENGTH: 3 LBS. MINIMUM AXIAL PULL



3112-2-000
A

REVISIONS			ALT	DESCRIPTION	BY	CHK	ENG
A	SEE ECN 3112-2-000A				AHN		
					12/26/16		

(X,XX) DENOTES DIMENSIONS IN MILLIMETERS		PART NO.		DESCRIPTION		REMARKS	
MATERIAL		TITLE		BILL OF MATERIAL			
FINISH		ACCELERATION SWITCH NORMALLY OPEN		7.75G			
DO NOT SCALE DRAWING REMOVE BURRS, BREAK SHARP EDGES. TOLERANCES UNLESS SPECIFIED: FRACTIONAL DEC: .005 ±.01 MACH FINISH: 125 ✓		NO. REVD	N/A	NO. REVD	N/A	SCALE: 4:1	WEIGHT: NOTED
AHN		9/10/09		DRAWING NO. 3112-2-000		REV A	
select controls inc.		45-3 KNICKERBOCKER AVE. BOHEMIA, N.Y. 11716		DATE		SHEET 1 OF 1	