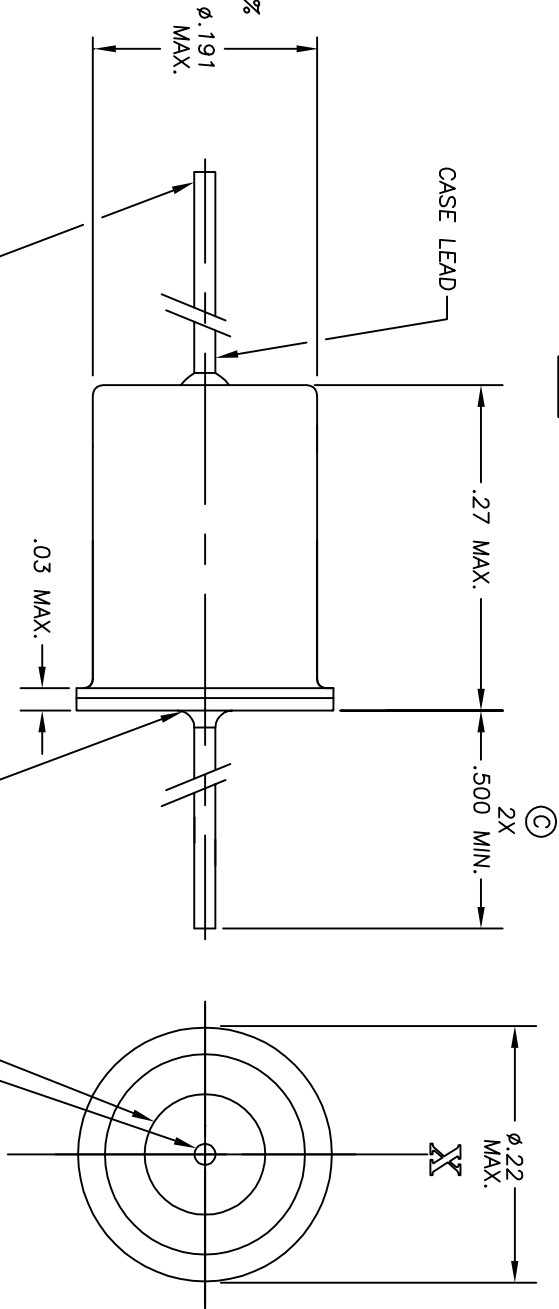


THIS DOCUMENT IS THE PROPERTY OF SELECT CONTROLS INCORPORATED AND IS CONVEYED WITH THE EXPRESS CONDITION THAT IT AND THE INFORMATION CONTAINED IN IT ARE NOT TO BE USED, DISCLOSED, OR REPRODUCED IN WHOLE OR IN PART, FOR ANY PURPOSE WITHOUT THE EXPRESS WRITTEN CONSENT OF SELECT CONTROLS INCORPORATED; AND THAT NO RIGHT IS GRANTED TO DISCLOSE OR SO USE ANY INFORMATION CONTAINED IN SAID DOCUMENT.

NOTES:

1. WEIGHT: 2.0 GRAMS MAXIMUM
2. CONTACT: SPST, MOMENTARY, NORMALLY OPEN, CASE GROUND
3. OPEN CIRCUIT RESISTANCE: 30 MEGOHMS AT 500 VDC
4. CLOSED CIRCUIT RESISTANCE: 10 OHMS MAX. AT 200 mA
5. CONTACT RATING: 50mA FOR TWO MINUTES
6. OPERATING CHARACTERISTICS:
AT CENTRIFUGE STEADY STATE ACCELERATION, SWITCH CLOSURE SHALL OCCUR AT $100g's \pm 15\%$
7. TEMPERATURE:
A) OPERATING: -65° TO $+185^{\circ}F$
B.) NON-OPERATING -65° TO $+235^{\circ}F$
8. SWITCH SEAL: HERMETIC, PER MIL-STD 750C TEST CONDITION D. **(C)**
9. CASE LEAD AND HEADER WELD STRENGTH:
3 POUNDS MINIMUM AXIAL PULL WITHOUT DAMAGE
10. SOLDERABILITY PER MIL-STD-202 METHOD 208, LESS AGING
11. DESIGN STORAGE LIFE: 10 YEARS MAXIMUM



3108-1-000

REVISIONS			
ALT	DESCRIPTION	BY	CHK
B	REDRAWN SEE ECN 3108-1-000B	AMN	1/23/10
C	SEE ECN3108-1-000C	AMN	5/28/13

MATERIAL		TITLE		BILL OF MATERIAL		DESCRIPTION		REMARKS	
FINISH		SWITCH, ACCELERATION 100g's							
DO NOT SCALE DRAWING REMOVE BURRS, BREAK SHARP EDGES. TOLERANCE, UNLESS SPECIFIED: DIM. $\pm .010$ HOLE $\pm .010$ FINISH 125/ RMS		NO. RECD		NO. RECD		SCALE: 10:1		DATE: 5/12/00	
		N/A		N/A		WEIGHT: NOTED		DRAWING NO. 3108-1-000	
						APPROVED		REV	
						DATE		SHEET 1 OF 1	

45-3 KNICKERBOCKER AVE.
BOHEMIA, N.Y. 11716