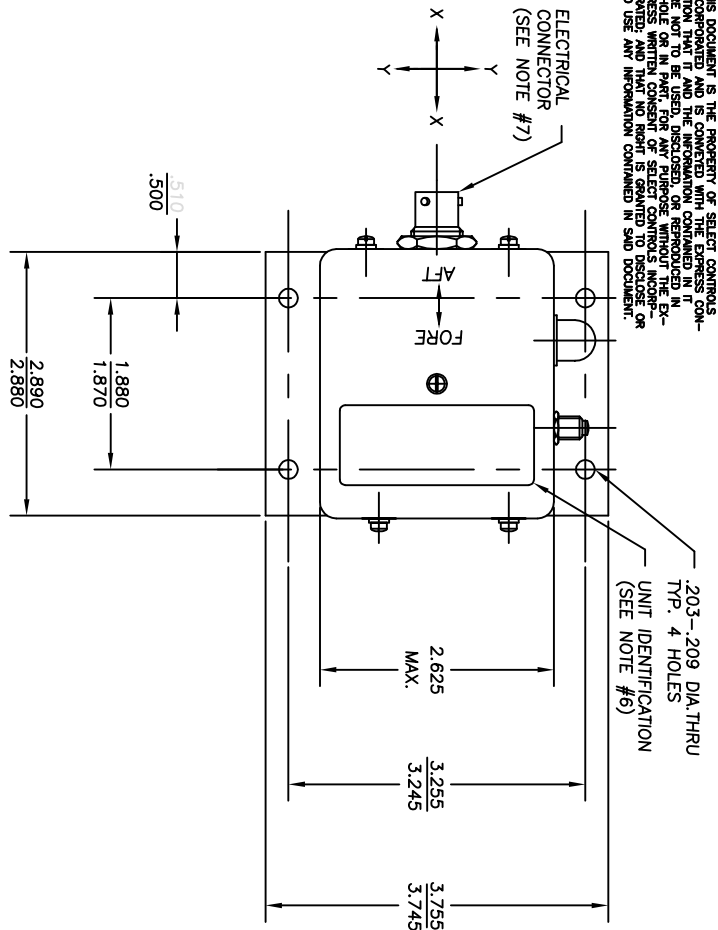


THIS DOCUMENT IS THE PROPERTY OF SELECT CONTROLS CORPORATION AND IS CONNECTED WITH THE EXPRESS CONDITION THAT IT AND THE INFORMATION CONTAINED IN IT ARE NOT TO BE USED, DISCLOSED, OR REPRODUCED IN ANY MANNER WITHOUT THE WRITTEN CONSENT OF SELECT CONTROLS CORPORATION; AND THAT NO RIGHT IS GRANTED TO DISCLOSE OR SO USE ANY INFORMATION CONTAINED IN SAID DOCUMENT.



203-.209 DIA. THRU
TYP. 4 HOLES
UNIT IDENTIFICATION
(SEE NOTE #6)

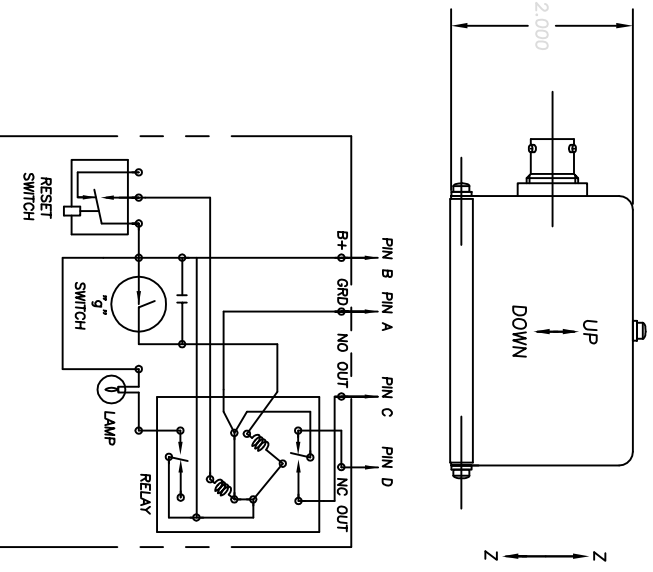
NOTE:
1. WEIGHT: 300 GRAMS MAX.
2. OPERATING VOLTAGE: 28 +/- 4 VDC
3. OPERATION:
a) THE LAMP GOES "OFF" AND THE SWITCHED OUTPUT IS TOGGLED.
b) OPERATION OF THE "g" SWITCH CAUSES THE N.O. RELAY CONTACTS TO CLOSE (THE N.C. CONTACTS OPEN) SO THAT THE LAMP IS "ON" AND THE SWITCHED OUTPUT IS TOGGLED.

4. LATCHING RELAY CHARACTERISTICS:
a) TYPE: DOUBLE WINDING, PLASTIC SEALED
b) CONTACTS: DPDT, BIFURCATED CROSS BAR, SILVER (AG) CONTACT.
c) CONTACT RATING: 2.0 AMPERES RESISTIVE AT 24 VDC
1.0 AMPERES INDUCTIVE AT 24 VDC

5. "g" SWITCH:
a) HERMETICALLY SEALED; PLANAR
b) INSENSITIVE ALONG Z-Z AXIS
c) SWITCH CONTACTS CLOSE AT 2.5 "g" +/- 10% WHEN APPLIED IN ANY DIRECTION IN THE X-Y PLANE

6. UNIT IDENTIFICATION:
NAMEPLATE SHALL INCLUDE:
GULFSTREAM AEROSPACE CORP.
IMPACT SWITCH
P/N 1159 SCAY402-2
S/N
MFG. SELECT CONTROLS INC.
CODE IDENT. 1UB59
MFG. P/N 2098-2-000

7. ELECTRICAL CONNECTOR: BENDIX P/N PT07-8-4P



CIRCUIT SCHEMATIC
(SHOWN AFTER OPERATION OF RESET SWITCH)

REVISIONS			BY	CHK	ENG
ALT	DESCRIPTION				
A	SEE EGN 2098-2-000A		AMN		

2098-2-000
A

MATERIAL	FINISH	TITLE	PART NO.	DESCRIPTION	REMARKS
TO NOT SCALE DRAWING REMOVE BURRS, DEBurr SHARP EDGES. TO DIMENSIONS (UNLESS SPECIFIED) .04" 30" MACH FINISH. DEC. 2008 & 2/2009		SWITCH, IMPACT		350 I CENTRAL AVE. BOHEMIA, N.Y. 11716	
BILL OF MATERIAL					
SCALE: 1 = 1	NOTED				
DATE	2098-2-000				
SHEET 1 OF 1					